

RoboThespian™

RT3

**Head Cable
Replacement**

**Engineered Arts Limited
Unit 11, Kernick Business Park
Penryn
Cornwall
United Kingdom
TR10 9EW**

T: +44 (0) 1326 378129

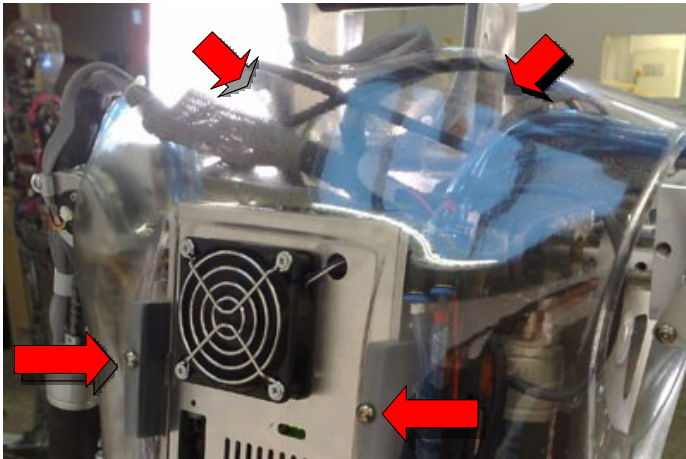
E: will@engineeredarts.co.uk

W: www.engineeredarts.co.uk

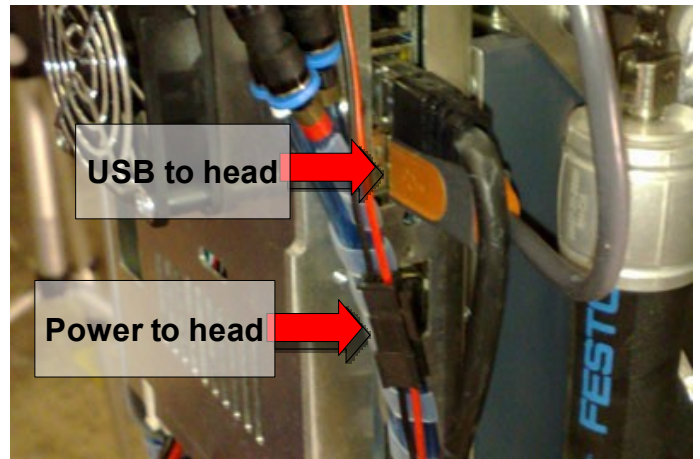
20 March 2011

Replacing Head Cable

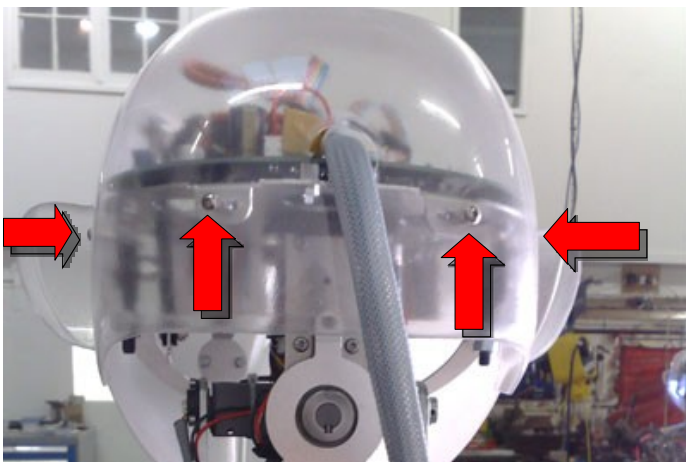
Shut down RoboThespian and disconnect from mains power before continuing.



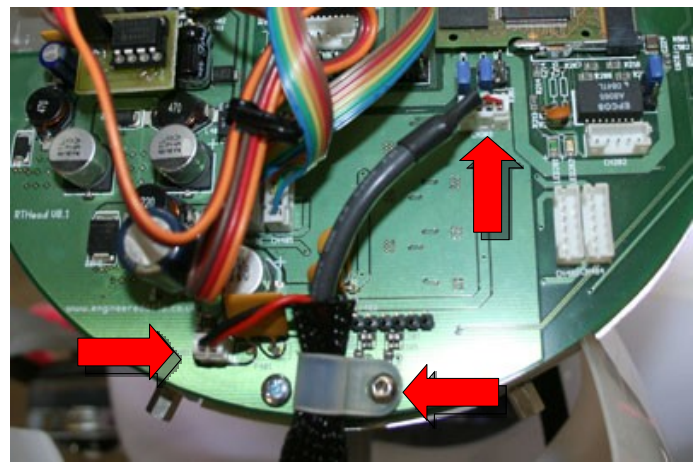
The rear torso shell is held on by screws at a number of locations, typically on the back, shoulders (and/or sides).



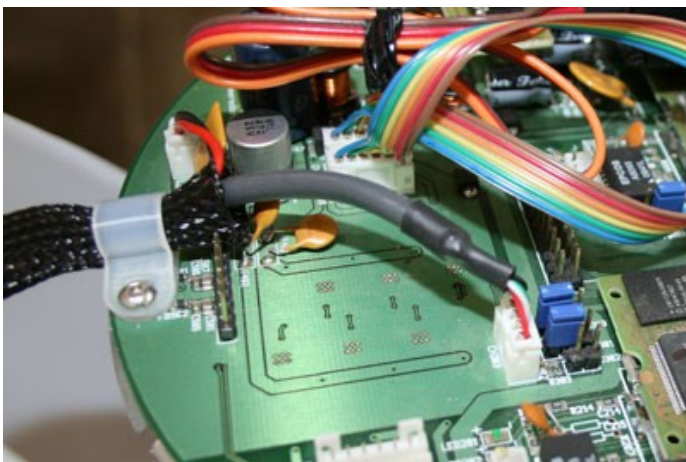
Two cables run from the head to the rest of RoboThespian: power and USB. Disconnect these.



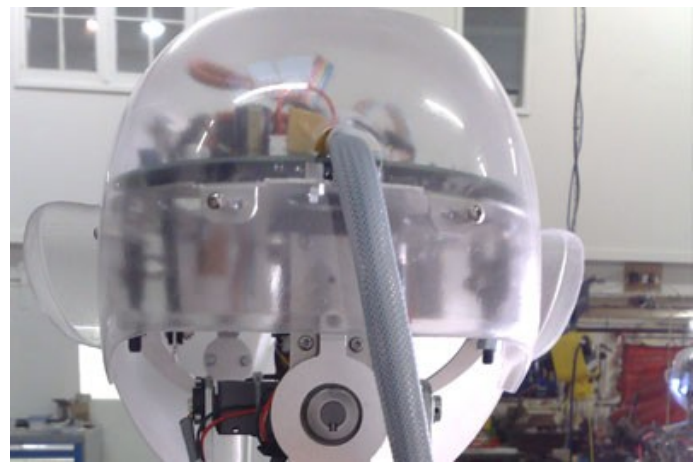
The rear head shell is secured with screws. Remove these and take off the rear head shell.



Remove the USB (4 pin) and power (2 pin) plugs from the board. Take care to pull on the plugs, not the cables. Unscrew the P-clamp which holds the cable.

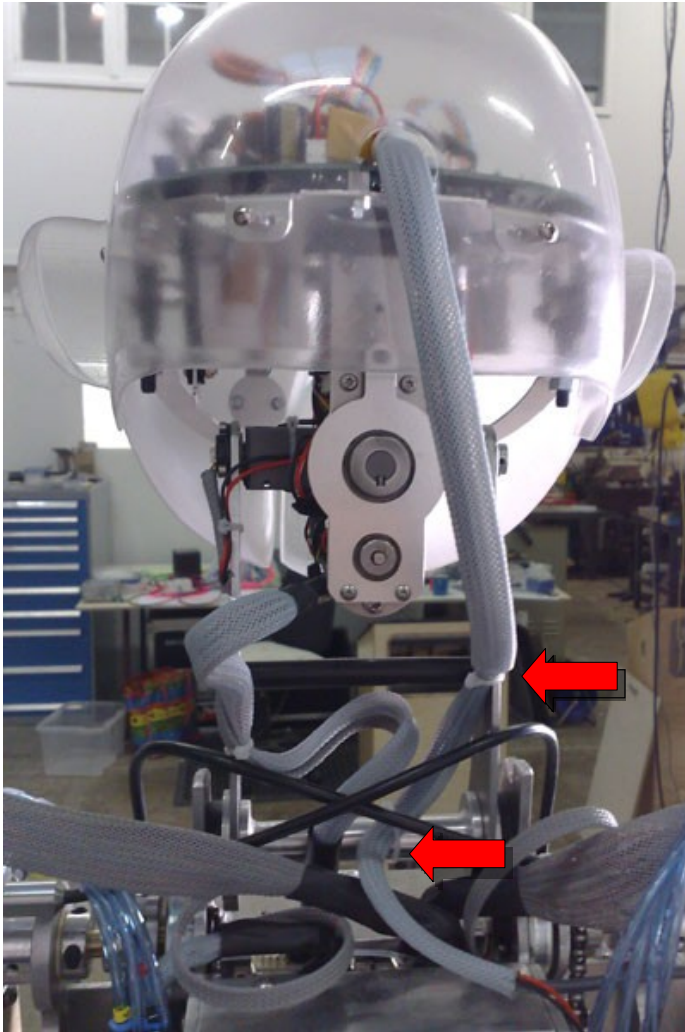


Plug in the USB (4 pin) and power (2 pin) plugs of the new cable. Check that the plugs are inserted the correct way round. Clamp the cable so that there is no strain on the plugs.

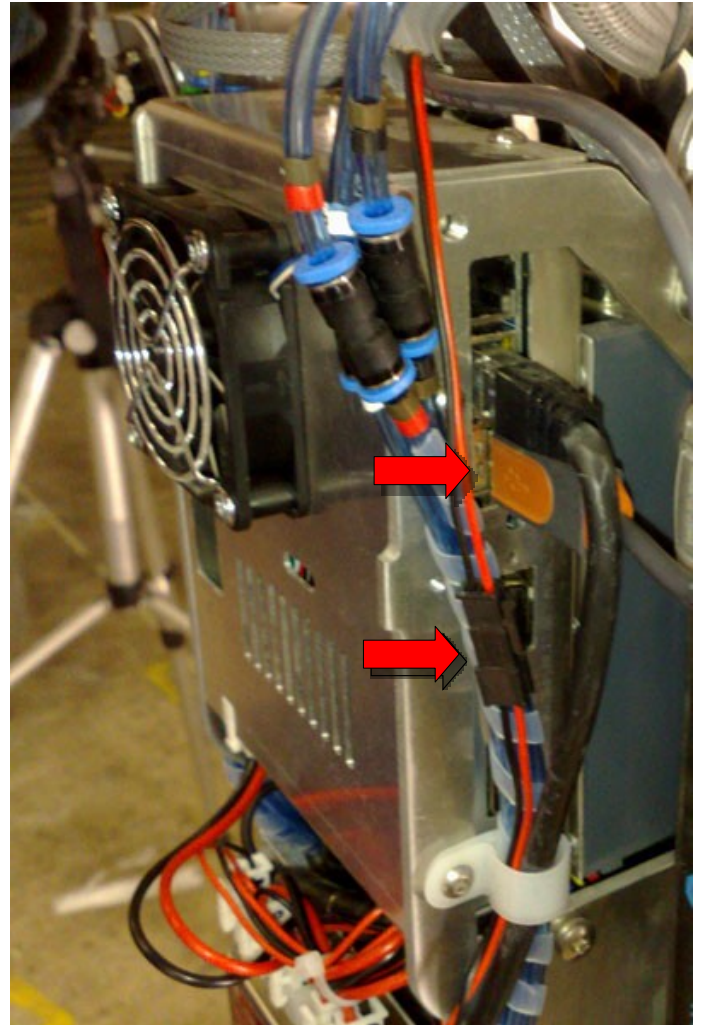


Thread the cable through the hole in the head shell and replace the head shell.

Replacing Head Cable (continued)



Use cable ties at the positions shown to attach the cable to RoboThespian's neck. Ensure that there is enough slack in the cable for the head to move fully.



At the other end of the cable, plug in the USB and power for the head

Check that the polarity of the plug is correct. The red wire connects to the red wire. The black wire to the black.

Replace the back body shell and start up RoboThespian.