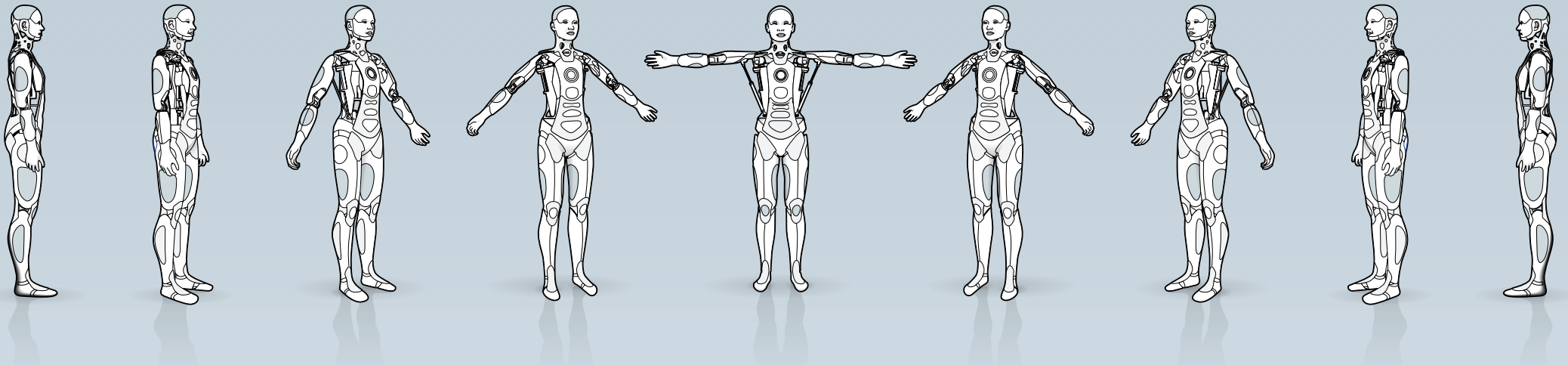
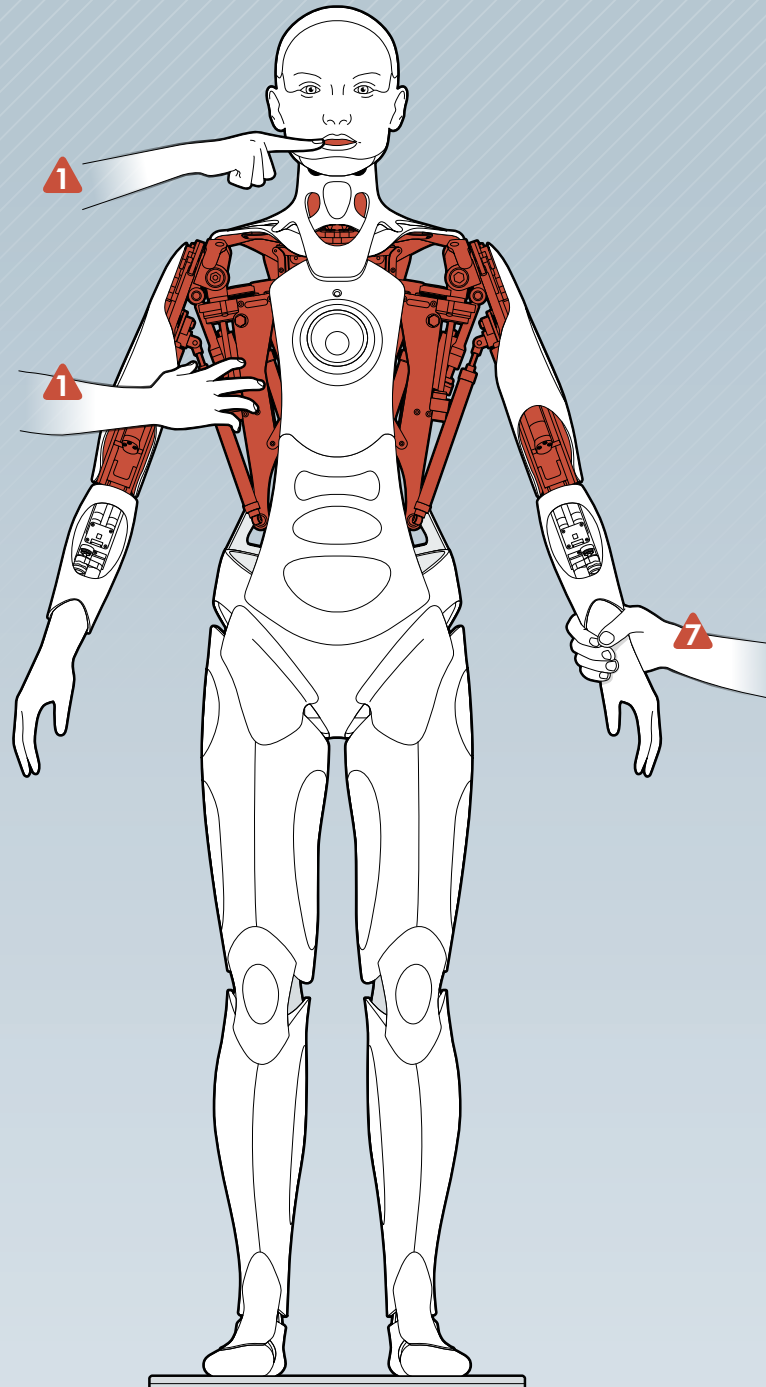
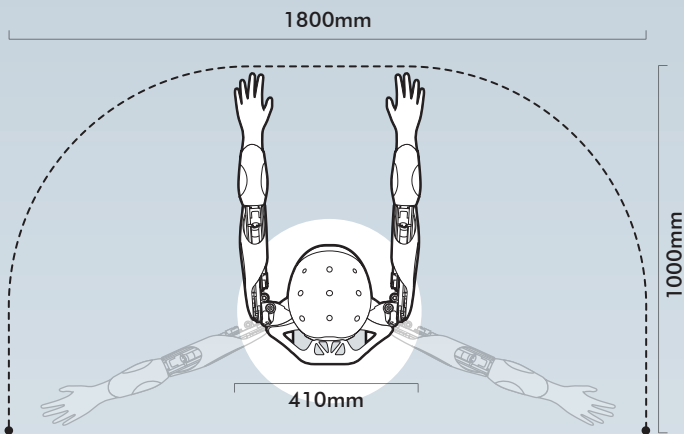


# AMECA SAFETY GUIDELINES



# Safe use of Ameca

- 1 Risk of injury**  
Please make sure hands, hair or any loose clothing are not in the area marked in red during Ameca's operation
- 2 Internal use only**  
Ameca is designed for indoor use only
- 3 Direct sunlight**  
Please make sure Ameca is not in direct sunlight for prolonged periods of time
- 4 Safe operation distance**



- 5 Drinks/Liquids**  
Please make sure no liquids come into contact with Ameca
- 6 Trip hazard**  
Please make sure cables are secure and don't cause a trip hazard
- 7 Touching and holding**  
Please make sure Ameca's movements are not restricted in anyway
- 8 Secure base**  
Please make sure the feet/legs are securely attached to the base and, if necessary, the base attached to the floor
- 9 Covering**  
Do not dress Ameca with clothing or cover any part of the robot whilst it is in operation
- 10 Torso stops**  
Make sure the torso stops are removed from the torso before operating the robot

*Do not attempt to assemble, disassemble or operate Ameca without prior safety training from an Engineered Arts technician*