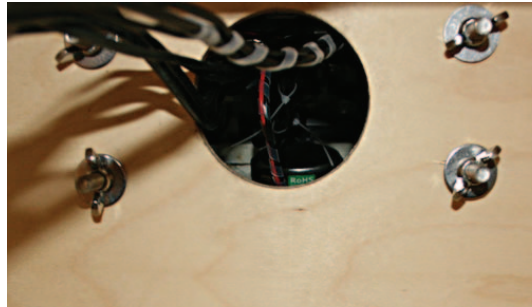


SOCIBOT ASSEMBLY GUIDE

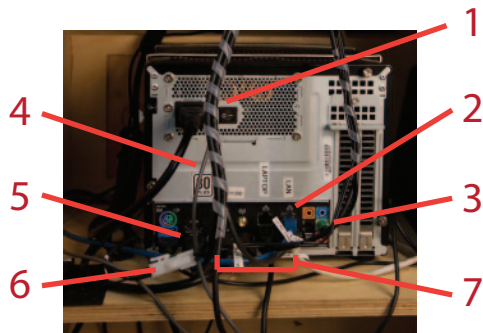
1. Insert cables through central hole in plinth. Set SociBot on the plinth with the four (4) long screws in the four (4) holes around the centre.



2. Pull cables clear of the kiosk components and fasten wingnuts to secure SociBot.



3. Connect cables



1. Power
2. LAN connection
3. Audio jack (green socket)
4. Projector power
5. HDMI (bottom plug only!)
6. Motion/Amplifier power
7. USB ports (motion board, head camera, depth sensor, optional keyboard - use any EXCEPT for blue USB 3.0 on upper right)

4. Connect arms

