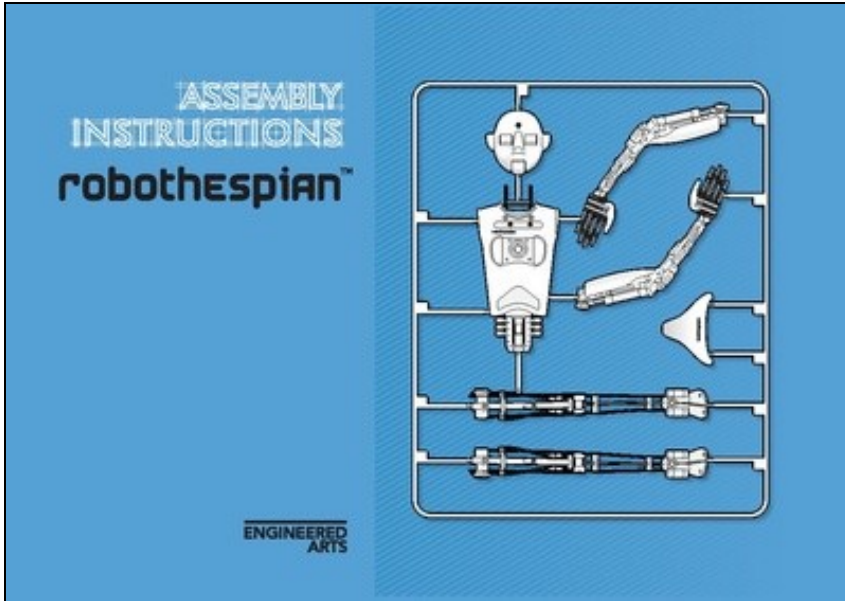


RoboThespian Quickstart



Downloadable RoboThespian Assembly and Safety Instructions (pdf)
[RoboThespian >> RoboThespian Quickstart](#)

Contents

- 1 Quick Start Guide
 - ◆ 1.1 Introduction
 - ◆ 1.2 Minimum Installation Requirements
 - ◆ 1.3 Do's and Don'ts
 - ◆ 1.4 Safe Operation
 - ◆ 1.5 Unpacking and Assembly
 - ◆ 1.6 Setting up the supplied compressor
 - ◆ 1.7 Starting up RoboThespian
 - ◆ 1.8 Control your RoboThespian from the touchscreen kiosk
 - ◆ 1.9 Access RoboThespian's Control Panel
 - ◆ 1.10 Shutdown procedure
 - ◆ 1.11 Explore further features

Quick Start Guide[\[edit\]](#)

Introduction[\[edit\]](#)

This is a guide to first installation and operation of [RoboThespian](#) aimed at new customers.

You can also view or download the printable RoboThespian Assembly and Safety Instructions from the image on the top right of this page.

Minimum Installation Requirements[\[edit\]](#)

- Suitable for indoor use only. Recommended room temperature: 10°C - 30°C, relative humidity: 45% - 60%
- Standard domestic mains power in the range 100v - 250v AC
- A barrier to prevent contact between visitors and RoboThespian.
- Wired internet network connection with good bandwidth - see [Network Setup](#). Required for [TinMan Telepresence](#), [remote administration](#) and support, and the application of updates and new software/content features.
- Un-oiled, compressed air at 6bar (87psi), filtered to 10µm. Peak air consumption 30L/min (7.9 US gpm) at 6bar (87psi) maximum, on average consumption is much less (Engineered Arts can supply a suitable portable air compressor unit if no fixed supply available)
- Airline connection to robot is via an 8mm (5/16in) outside diameter Push-In-Fitting.
- Extra 8mm (5/16in) outside diameter polyurethane tubing can be supplied on request.

Do's and Don'ts[\[edit\]](#)

- ✓ Y Do follow the instructions in this wiki
- ✓ Y Do maintain your RoboThespian to ensure it operates safely
- ✓ Y Do switch off your RoboThespian if it is damaged or malfunctioning
- ✓ Y Do treat your RoboThespian with care and respect
- ✗ N Don't allow visitors to touch RoboThespian
- ✗ N Don't disconnect any air or electrical connections while RoboThespian is connected to the mains or has the compressed air supply connected
- ✗ N Don't use solvent cleaners or abrasive pads on RoboThespian
- ✗ N Don't make modifications or alterations to any settings without consulting the manufacturer first
- ✗ N Don't remove any covers to electrical components unless instructed to do so

X N Don't hotplug any cables. Shut down robot and disconnect mains power before plugging / unplugging any cable

Safe Operation[[edit](#)]

Supervisors working in robot area must be familiar with the safety guidelines in the RoboThespian Assembly and Safety Instructions. If you do not have a printed copy we recommend printing the downloadable [RoboThespian Assembly and Safety Instructions \(pdf\)](#) and keeping at the robot's location.

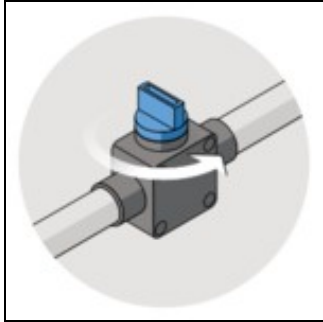
The key points are repeated here:

X N Keep hands and fingers well away from any moving parts while the robot is switched on - it may move at any time without warning!

X N Never reach inside the body, head or legs when the robot is powered!

X N In the event of an air leak / burst air muscle switch off the air at the blue valve

Y We recommend all supervisors make themselves familiar with the online documentation at <https://wiki.engineeredarts.co.uk/>



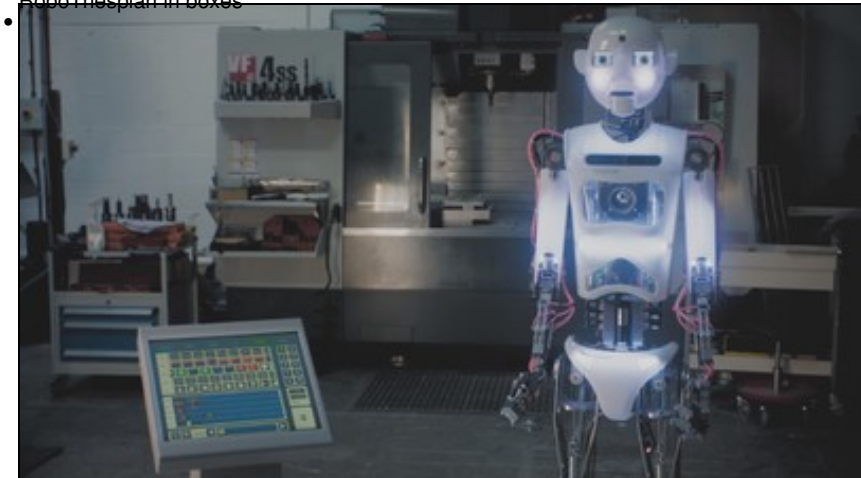
Shut off valve -> off

Unpacking and Assembly[[edit](#)]

How to unpack and assemble your robot.



RoboThespian in boxes



RoboThespian Assembled

See [RoboThespian Unpacking & Assembly](#) and watch the video.

Setting up the supplied compressor[\[edit\]](#)

If your RoboThespian is supplied with a compressor please see [Compressor Unpacking and Assembly](#)



Compressor

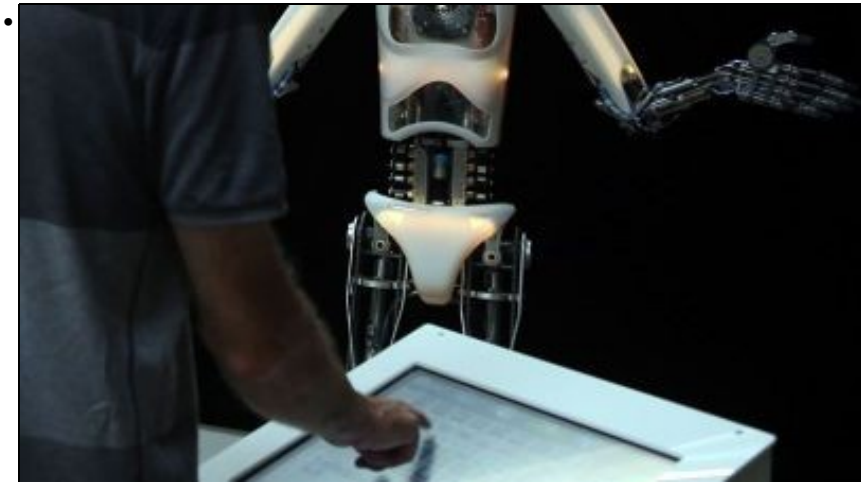
Starting up RoboThespian[\[edit\]](#)

RoboThespian and the touchscreen kiosk will start up automatically as soon as they are plugged into the mains power.

Control your RoboThespian from the touchscreen kiosk[\[edit\]](#)

The [touchscreen kiosk](#) offers you and your visitors an intuitive and easy way to interact with RoboThespian.

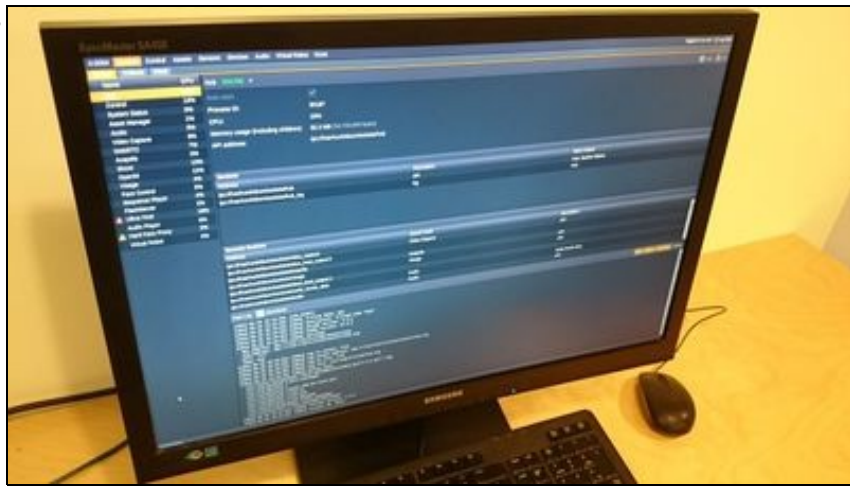
Now that your robot is up and running, get familiar with the features of the [Touchscreen](#)



RoboThespian Touchscreen

Access RoboThespian's Control Panel[\[edit\]](#)

When connected to the internet, you can access and control RoboThespian and modify settings. Please see [Control Panel](#) for further details.



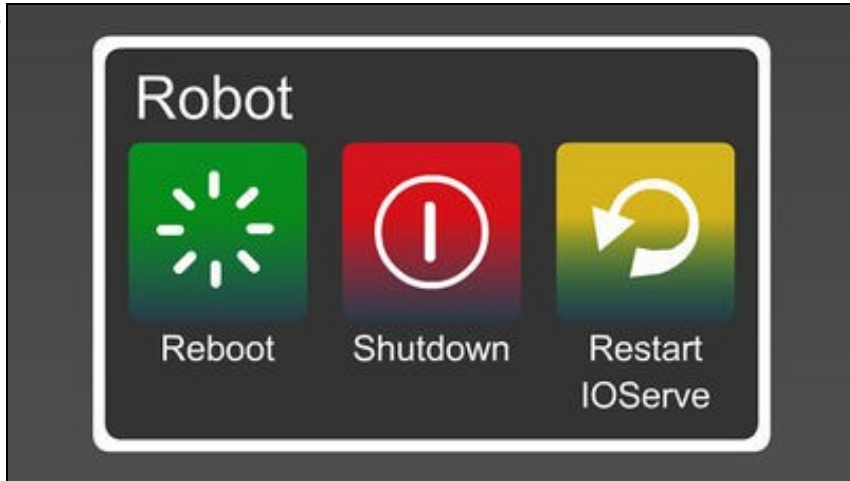
Control Panel

You can access this remotely when the robot is connected to the internet - see [Remote Connection](#)
If you have issues connecting to your RoboThespian over your LAN or remotely, please see [Network Setup](#)

Shutdown procedure[\[edit\]](#)

RoboThespian contains a PC and like any PC should be shut down fully before removing mains power.

Please see [RoboThespian Shut Down](#) for further details.



RoboThespian Shut Down

Explore further features[\[edit\]](#)

See [Features](#) and click on a feature to find out more

For more information and troubleshooting, please explore the links in the wiki, <http://wiki.engineeredarts.co.uk/>, or contact Engineered Arts if you can not find the information you are looking for in the wiki.